

Solution 2000 3000 Firmware Update Guide

Modified on: Thu, 31 Jan, 2019 at 9:46 AM

Solution 2000/3000 firmware update guide

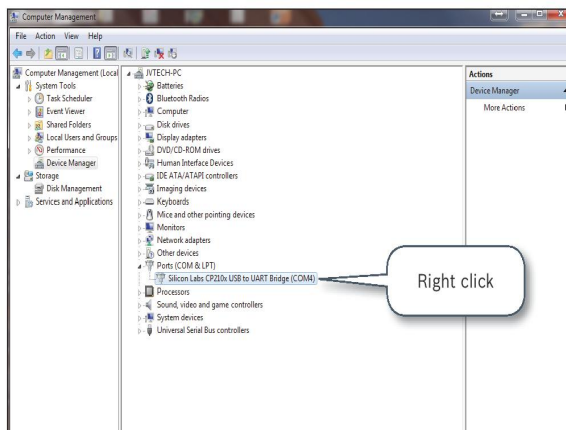
**BOSCH**

Invented for life

How to Check your COM Port

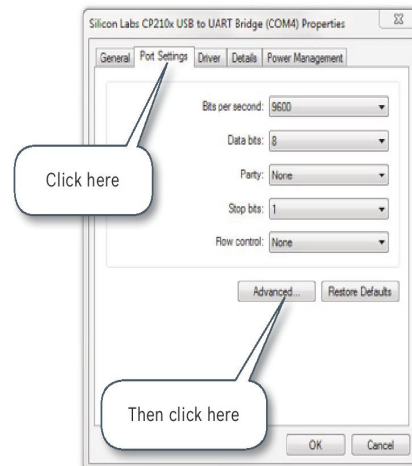
From your windows control panel, open device manager, select Ports (COM & LPT), Right click on the USB to UART Bridge.

1 Right click on 'Silicon Labs CP210x USB to UART Bridge (COM-X)'



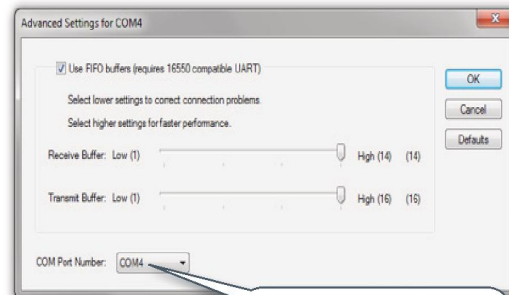
Key: X = Your COM number

2 Click on 'Port Settings' then 'Advanced'



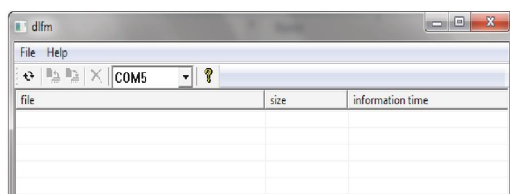
3 Set the COM port between 1 & 4

If you cannot see anything under Ports (COM & LPT) or you get an unknown device, you need to install the USB drivers (default is c:\Program Files (x86)\Bosch Security Systems\A-Link Plus\USB_DRIVER\DLA) select either the X86 or X64 file depending on your PC. Once you have done this you need to restart your PC and try again.

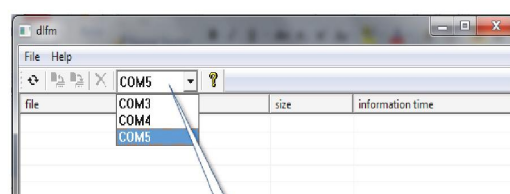


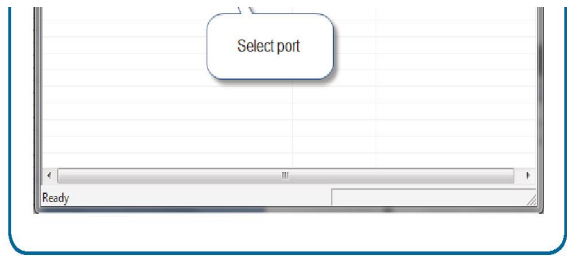
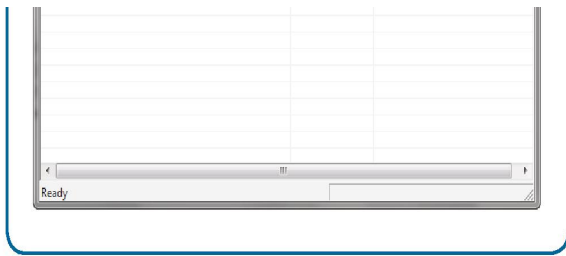
Direct Link File Management

1 Run DLA Download Tool (dlfm.exe) from within the A-Link Plus installation directory (default is c:\Program Files (x86)\Bosch Security Systems\A-Link Plus)

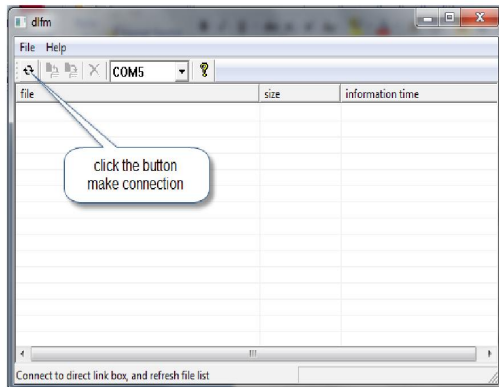


2 Select the COM port of the DLA from the pull down box in the menu





3 Click on the **connect** icon

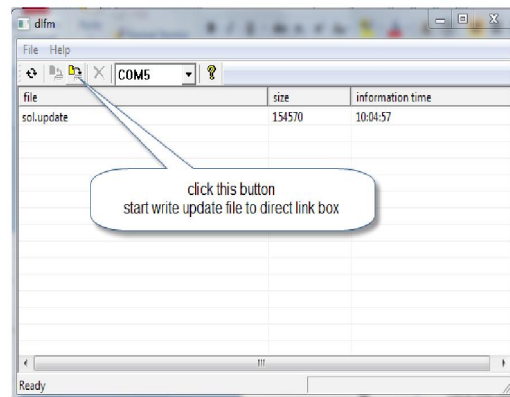


If there is an existing firmware file on the DLA, you can click **X** to delete it.

If you need to replace the firmware on the DLA, click on **Add/Replace** and then select the firmware file.

Hint: Panel firmware update file should end in .update and not .ZIP

4 Click on the icon and start write update file to direct link box

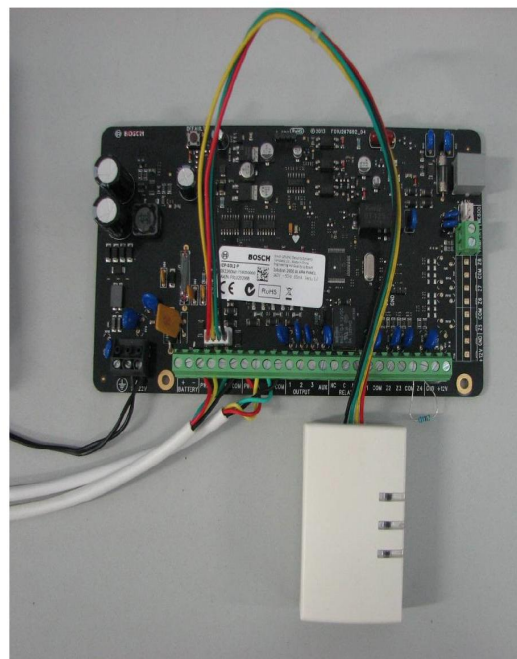


Once the correct firmware has been loaded onto the DLA, close the DLA Download Tool and disconnect the DLA from the Laptop/PC.

Update Firmware

Note: Although the firmware update process will not change any of the settings on the panel, it is advisable to backup the panel programming using the A-Link Plus software or the Direct Link Adapter prior to updating panel firmware.

1. Disconnect mains power and battery.
2. Connect the direct link adapter to the panel.
3. Hold "default" button on the panel PCB.
4. Power up panel.
5. Wait about 45s (panel heart beat light will illuminate solid – button can be released at this point. Once the heart beat light begins flashing, the operation is complete).
6. Power off and disconnect direct link box.
7. Reconnect bus devices.
8. Power up the panel.



Copyright © 2017 – In the interest of ongoing product improvement we reserve the right to change specifications at any time without notice – E&OE 12/17